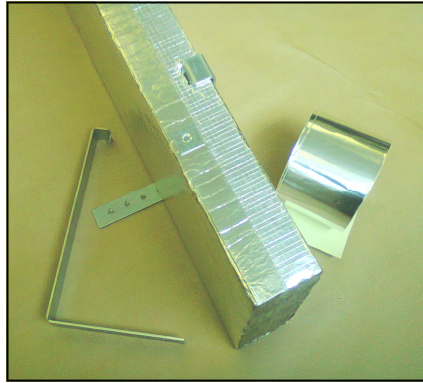


RAINSCREEN CLADDING BARRIER

**Concept
Conversions
Limited**

Unit 13,
Trinity Centre,
Park Farm Ind Est,
Wellingborough,
Northants.
NN8 6ZB

- **Fabricated to suit specific cavity size**
- **Integral intumescent edge strip**
- **Simple fixing system**
- **60-120 minutes fire resistance**
- **Maintenance free**

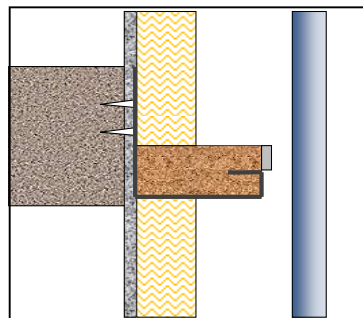


Description

Concept Rainscreen Cladding Barrier consists of rigid strips of non-combustible mineral wool that have all four edges faced with bright Class O reinforced foil. To one edge, a length of intumescent strip has been factory applied.

Purpose

Concept Rainscreen Cladding Barrier is designed to provide a horizontal barrier that will prevent the passage of smoke and fire whilst maintaining the requirement to provide a 25mm or 50mm cavity behind rainscreen cladding systems. This allows any penetrating water to drain vertically and a free flow of air



SIDE VIEW SHOWING RAINSCREEN BARRIER HELD IN PLACE BY THE UNIQUE RETAINING BRACKET

Standards and Performance

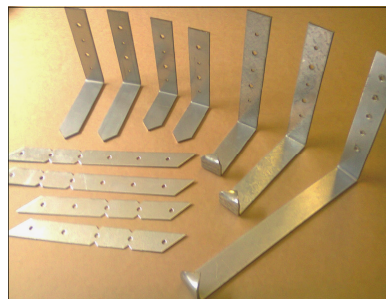
The mineral wool core of a Concept Rainscreen Cladding Barrier is non-combustible to BS476: part 4: (1984). The product has been independently tested adopting procedures and criteria of EN1363-1-1999 and principles of EOTA-TR31



Dimensions

Concept Rainscreen Cladding Barrier is manufactured to suit the specific cavity width, fire rating and residual gap required.

RSB 60/25	60 minutes fire	25mm gap
RSB 60/50	60 minutes fire	50mm gap
RSB 90/25	90 minutes fire	25mm gap
RSB 120/25	120 minutes fire	25mm gap
RSB 100/50	100 minutes fire	50mm gap



Fixing

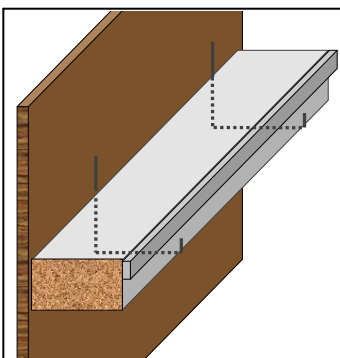
Rainscreen Cladding Barrier is secured to the inner structural wall utilising one of the unique Rainscreen Barrier Retaining Bracket systems. For smaller cavities, these are supplied with a flat shaft to suit the specific barrier width supplied. Wider cavities utilise our unique self retaining bracket.

Care should be taken to ensure the insulation fits tightly into the bracket and is held firmly against the inner structural wall. Two brackets should be used per length of barrier at approximately 250mm centres. The brackets are secured to the inner wall using steel anchors or screws before the insulation is "push fitted" in to place. Adjacent lengths of barrier should be tightly butted and the top of the joint sealed with foil tape. For larger cavities, or for large projects, the brackets can be supplied pre-bent to speed up installation time on site.

Vertical Barriers

For vertical barriers in rainscreen systems it should be possible to fully fill the void with Concept Firestop Slab.

Firestop 60 provides 60 minutes fire resistance
Firestop 120 provides 120 minutes fire resistance



RETAINING BRACKETS ARE FIXED TO THE INNER STRUCTURAL WALL BEFORE THE BARRIER IS FITTED. THE INTUMESCENT EDGE STRIP IS SITED ABOVE THE RETAINING BRACKET ALLOWING FULL EXPANSION

Tel 01933 673100
Fax 01933 675353

Email
conceptsales@btconnect.com
Web
concept-conversions.co.uk