

POLYCOR PLUS INSULATED DPC CAVITY CLOSER

**Concept
Conversions
Limited**

Unit 13,
Trinity Centre,
Park Farm Ind Est,
Wellingborough,
Northants
NN8 6ZB

Data sheet 1014

Description

Polycor *Plus* Insulated DPC Cavity Closer consists of closed cell low density polyethylene foam fully bonded to polyethylene damp proof course.

- **Meets Building Regulations.**
- **DPC conforms to BS6515**
- **Simple to install.**
- **Integral damp proof course.**
- **Maintenance free.**

Purpose

Polycor *Plus* Insulated DPC Cavity Closers are designed to reduce cold bridging around door and window frames. They are generally used where a traditional block return is used to close the cavity.

Dimensions

Roll length:	10 metres
Insulation width:	100mm and 140mm
Insulation thickness:	17mm
DPC width:	165mm and 225mm



Technical Data

The DPC conforms to BS6515 (1984)

The DPC is embossed to aid mortar adhesion.

Insulated DPC Cavity Closers conform to the 1995 Building Regulations when installed correctly.

The closed cell polyethylene foam has a thermal conductivity of 0.034 W/mK.

The product is manufactured from CFC and HCFC free material.

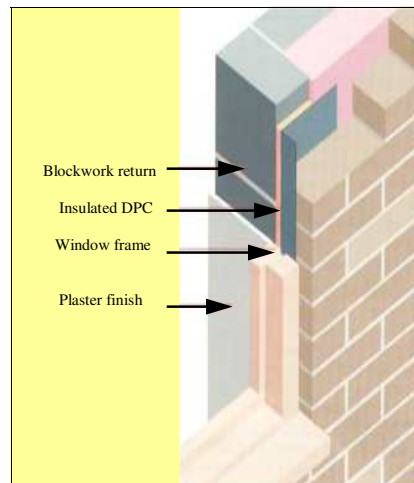
Fixing

Polycor *Plus* DPC Cavity Closer should be fitted during the building process prior to the installation of door and window frames.

The product should be fitted DPC side against the inner face of the outer brickwork, with one of the flanges folded against the door or window frame in the normal way, and with the other flange remaining flat against the inner face of the outer brickwork.

If more than one length of DPC Cavity Closer is required, or wherever there is a joint between two pieces they should be fitted with a flange at the bottom and with the next closer forming a close butt joint over the flange.

The top of the Insulated DPC Cavity Closer should be sealed to the underside of the lintel or protected behind a cavity tray.



Handling

Polycor Plus DPC Cavity Closers are supplied in strong polyethylene bags for on site protection.

Care should be taken to keep the product dry prior to installation and it is not recommended to store the product in direct sunlight. Some local delamination may occur during handling. This does not detract from the performance of the product.

Tel 01933 673100
Fax 01933 675353

Email
conceptsales@btconnect.com
Web
concept-conversions.co.uk