

# A/F PARTY WALL SOCK

**Concept  
Conversions  
Limited**

**Unit 6/7  
Hill Farm Estate  
Irthlingborough Rd  
Little Addington  
Northants  
NN14 4AS**

Data sheet 1006

## Description

Concept A/F Party Wall Sock consists of a length of flexible mineral wool slab fully enclosed in polythene.

## Purpose

Concept A/F Party Wall Sock is designed to minimise sound transmission and fire penetration through the wall cavity of external party walls and separating floors.

## Dimensions

Concept A/F Party Wall Socks are supplied in 1200mm lengths, normally 300mm or 380mm wide, and are factory cut to suit cavity widths from 50mm to 150mm.

- **Meets Building Regulations**
- **Complies with Robust details Part E**
- **Fire, thermal and acoustic solution**
- **Simple to install.**
- **Water repellent.**
- **Maintenance free.**



## Standards and Performance

The mineral wool core of a Concept A/F Party Wall Sock is non-combustible to BS476: part 4: (1984).

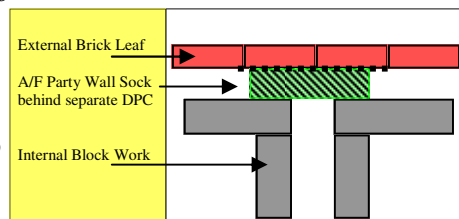
The correct use of a Concept A/F Party Wall Sock will exceed the requirement to provide a 30 minute cavity fire barrier as defined in Table A1 of Appendix A to Approved Document B of the Building Regulations 2006 (2013 edition). The product has been independently tested adopting procedures and criteria from BS476 : part 20 : (1987) and achieved 1 hour fire resistance. Approved Document B of the Building Regulations 2006 (2013 edition), "Concealed Spaces (cavities)" details the requirement and purpose for which a cavity barrier should be installed.

Concept A/F Party Wall Socks comply with the robust details accepted to provide a solution which satisfies the Approved Document E (2003 edition) of the Building Regulations relating to the transmission of sound.

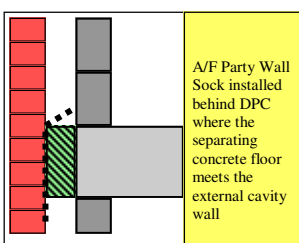
## Fixing

Concept A/F Party Wall Socks are supplied 10mm to 15mm thicker than the cavity in which they are to be installed and are friction fitted during the brickwork process.

During vertical installation it is advisable to place a length of damp proof course between the cavity stop sock and the outer leaf.



During horizontal installation it is advisable to protect the Party Wall Sock with a damp proof course or proprietary cavity tray immediately above with a minimum 100mm upstand.



Special attention must be paid to the joints to ensure that these are very closely butted. Cavity barriers may fail at the joints if a gap is left and it is recommended that the polythene is cut away from both adjoining ends to ensure the closest joint possible. Horizontal barriers should overlap by 150mm to ensure continuity. The Party Wall Sock should bridge the whole cavity as shown in the adjacent diagram.

**Tel 01933 655693  
Fax 01933 652264**

**Email  
conceptsales@btconnect.com  
Web  
tas-online.co.uk**