

HORIZONTAL RAINSCREEN CLADDING BARRIER



Side view showing rainscreen barrier held in place by the unique retaining bracket

DESCRIPTION:

CCL Rainscreen Cladding Barrier consists of rigid strips of non-combustible mineral wool that have all four edges faced with bright Class O reinforced foil. To one edge, a length of intumescent strip has been factory applied.

PURPOSE:

CCL Rainscreen Cladding Barrier is designed to provide a horizontal barrier that will prevent the passage of smoke and fire whilst maintaining the requirement to provide a 25mm or 50mm cavity behind rainscreen cladding systems. This allows any penetrating water to drain vertically and a free flow of air around the building envelope.

BENEFITS:

- Fabricated to suit specific cavity size
- Integral intumescent edge strip
- Simple fixing system
- 60-120 minutes fire resistance
- Maintenance free

Specification

Dimensions

CCL Rainscreen Cladding Barrier is manufactured to suit the specific cavity width, fire rating and residual gap required:

HRSB 60/25	60 min fire	25mm gap
HRSB 60/50	60 min fire	50mm gap
HRSB 120/25	120 min fire	25mm gap
HRSB 100/50	100 min fire	50mm gap

Vertical Barriers:

For vertical barriers in rainscreen systems it should be possible to fully fill the void with CCL Firestop Slab.

- CCL Firestop 60 provides 60 minutes fire resistance.
- CCL Firestop 120 provides 120 minutes fire resistance.

Standards & Performance:

The mineral wool core of a CCL Rainscreen Cladding Barrier achieves a fire classification of Euroclass A1 as defined in BS EN 13501-1. The product has been independently tested adopting procedures and criteria of EN1363-1-1999 and principles of EOTA-TR31. The system was tested between two concrete lintels as outlined in Technical Guidance Document TGD-19. Guidance should be sought to ensure the fire performance of the building envelope is comparable to the selected cavity barrier.

Fixing:

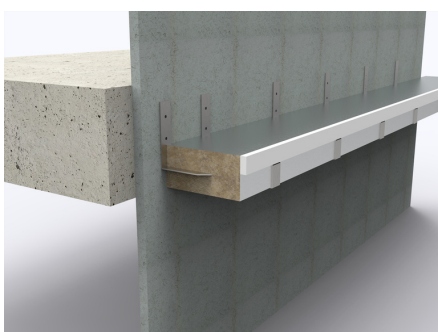


Rainscreen Cladding Barrier is secured to the inner structural wall utilising one of the unique Rainscreen Barrier Bracket systems. For smaller cavities, these are supplied with a flat shaft to suit the specific barrier width supplied.

Wider cavities utilise our unique self-retaining bracket. Care should be taken to ensure the insulation fits tightly into the bracket and is held firmly against the inner structural wall.

Two brackets should be used per length of barrier sited approx. 250mm from each edge. The brackets are secured to the inner wall using steel anchors or screws before the insulation is "push fitted" into place.

Adjacent lengths of barrier should be tightly butted and the top of the joint sealed with foil tape.



Retaining brackets are fixed to the inner structural wall before the barrier is fitted



sales@concept-conversions.co.uk



01933-673100



www.concept-conversions.co.uk



Unit 13, Trinity Centre,
Park Farm Industrial Estate,
Wellingborough, Northants,
NN8 6ZB.